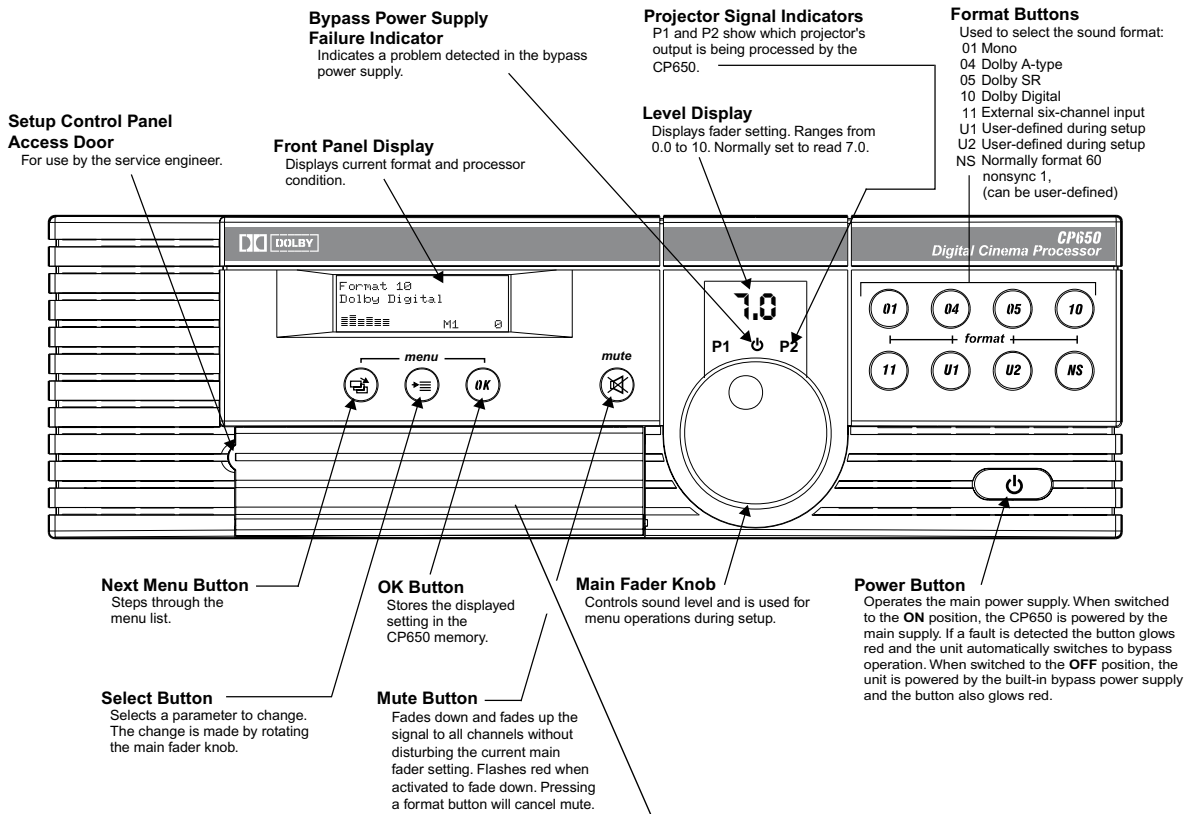


DIGITAL CINEMA PROCESSOR



DOLBY CP650



HARDWARE CONFIGURATIONS AVAILABLE

The CP650 is available in three versions:

Model CP650

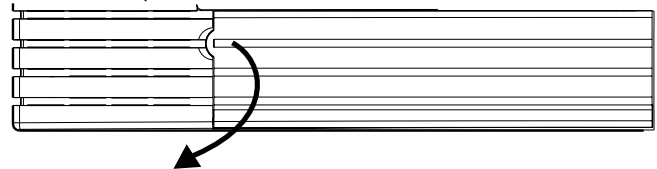
- Same as CP650D
- Dolby Digital Surround EX decoding and AES/EBU digital input

Model CP650D

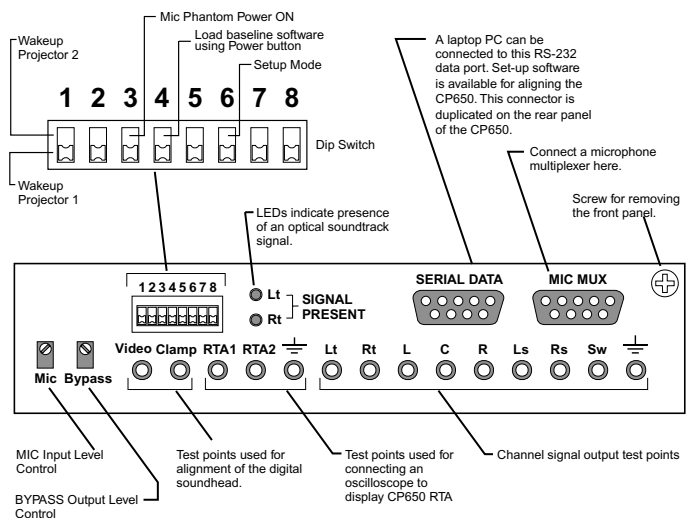
- Same as CP650SR
- Dolby Digital soundtrack decoding capability
- Upgradable to Dolby Digital Surround EX decoding and AES/EBU digital input by installing upgrade kit UDEX/650, which includes a Cat. No. 794 plug-in circuit board

Model CP650SR

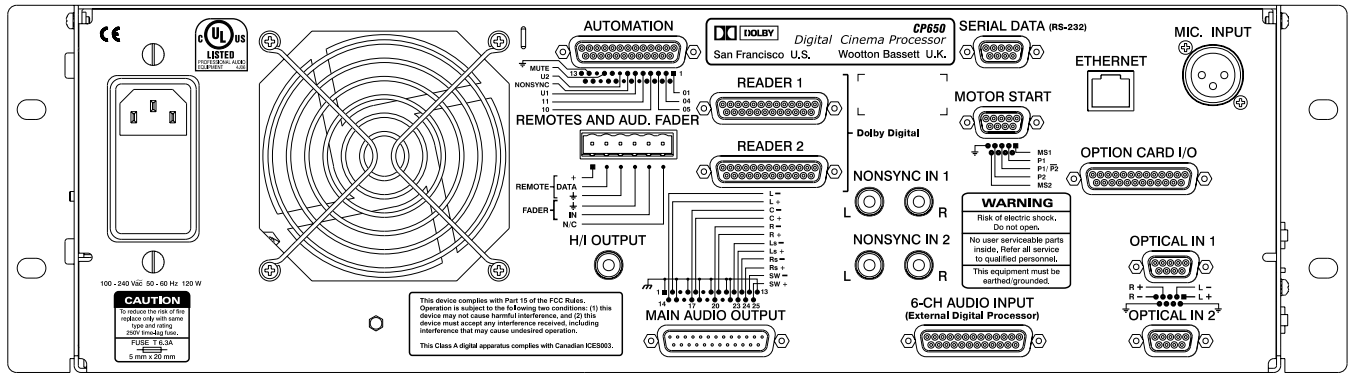
- Dolby A-type and SR analog soundtrack decoding capability
- Six-channel analog input
- Upgradable to Dolby Digital soundtrack decoding by adding upgrade kit UD/650, which includes a Cat. No. 773 plug-in circuit board
- Upgradable to Dolby Digital Surround EX decoding and AES/EBU digital input by adding upgrade kits UD/650 and UDEX/650 that includes a Cat. No. 794 plug-in circuit board



Setup Control Panel Access Door



Setup Control Panel (Behind Access Door)



CP650 Specifications

Signal Inputs

Optical: Balanced inputs for two projectors with stereo solar cells or analog LED readers. Digitally controlled gain and digital slit loss EQ. Power available for external cell preamp circuits. 9-pin D-connectors.

Digital film reader: Inputs for two Dolby digital soundheads. 25-pin D-connectors.

Nonsync: Two stereo inputs, 21 k Ω , sensitivity: 0.2–4V (NS 1), 0.06–1.5V (NS 2). RCA-type phono jacks.

Six-channel analog input: For external digital processor, ≥ 10 k Ω (L, C, R Ls, Rs, SW), 300 mV operating level. 25-pin D-connector.

Microphone: Balanced input for PA mic or B-chain alignment mic (or multiplexer), 15V phantom power switchable via front-panel DIP switch. Rear-panel XLR and front-panel 9-pin D-connector.

AES/EBU digital input: Accommodates stereo PCM audio at 48, 44.1, or 32 kpsps. Also accepts Dolby Digital or Dolby E bitstreams. Input via 25-pin D-connector, 110 Ω $\pm 20\%$, balanced.

Main Eight-Channel Signal Outputs

Balanced, output impedance: 100 Ω (load >600 Ω).
 Maximum level: +26 dBu (balanced loads), +20 dBu (unbalanced).
 Typical operating level: –10 dBu with fader set to 7.
 Operating range: 20–780 mV.

Other Connections

Cat. No. 779 remote control unit and **Cat. No. 771** remote fader (terminals for stripped wires). Connectors (front and rear) for external PC control and setup, **RS-232C** (9-pin D-connector).

Hearing impaired output: center-weighted sum of L, R, and C, output impedance 100 Ω , output level 200 mV fixed, unbalanced (RCA-type phono jack). **Automation** connector for controlling and indicating format, fader select, and mute. Interface similar to Model CP65. Connector for **Ethernet** link (future use, RJ-45).

Dolby Decoding

5.1 channels, Dolby Digital, and Dolby Digital Surround EX.
 Four channels, Dolby A-type.
 Two channels, Dolby SR.

Loudspeaker Equalization

L, C, R, Ls, Rs, Bsl, Bsr: 27-band digital 1/3-octave; plus bass and treble control.
 SW: digital parametric with 12-dB cut capability.

Distortion

Typically 0.005% in Dolby SR mode (output –10 dBu, input 10 dB over Dolby level).

Dynamic Range

Typically 99 dB with fader set to 7.

Dimensions and Weight

3-U rack-mount chassis. Faceplate: 5 3/8" (H) x 17 5/8" (W) [137 mm x 448 mm].
 Maximum projection behind equipment rack rail: 14 3/8" (365 mm).
 Maximum projection in front of mounting plate: 1 1/2" (38 mm).
 Weight: 23 lbs. (10.4 kg).
 Shipping Weight: 30 lbs. (13.6 kg).

Power Requirements

Main supply: 100–120 and 200–240 VAC, 50–60 Hz, 100 W max.
 Built-in bypass power supply. Unit designed to operate from a centrally switched power source.

Accessories

Cat. No. 771: Remote fader.

Cat. No. 779: Remote control unit.

UD/650: Upgrade kit converts 650SR to CP650D.

UDEX/650: Upgrade kit converts 650D to CP650 (standard unit).

Regulatory Notices

North America: This unit is designed to comply with the limits for a Class A digital device, pursuant to Part 15 of the FCC rules, and Industry Canada ICES-003 specifications. It is UL Listed for the U.S. and Canada.

Europe: This unit is designed to comply with the requirements of Low Voltage Directive 73/23/EEC and EMC Directive 89/336/EEC and carries the CE marking accordingly.

Warranty

One-year limited, parts and labor.

DISCLAIMER OF WARRANTIES:

Equipment manufactured by Dolby Laboratories is warranted against defects in materials and workmanship for a period of one year from the date of purchase. There are no other express or implied warranties and no warranty of merchantability or fitness for a particular purpose.

LIMITATION OF LIABILITY: It is understood and agreed that Dolby Laboratories' liability whether in contract, in tort, under any warranty, in negligence or otherwise shall not exceed the cost of repair or replacement of the defective components and under no circumstances shall Dolby Laboratories be liable for incidental, special, direct, indirect or consequential damages (including but not limited to damage to software or recorded audio or visual material), or loss of use, revenue or profit even if Dolby Laboratories or its agents have been advised, orally or in writing, of the possibility of such damages.

DD Dolby

100 Potrero Avenue, San Francisco, CA 94103-4813 Telephone 415-558-0200
 Fax 415-863-1373 info@dolby.com
 Wootton Bassett, Wiltshire, SN4 8QJ, England Telephone (44) 1793-842100
 Fax (44) 1793-842101 info@dolby.co.uk
 www.dolby.com
 Specifications subject to change without notice.
 Dolby, the double-D symbol, AC-3, and Surround EX are trademarks of Dolby Laboratories.
 ©Copyright 2000 Dolby Laboratories, Inc. S00/13067